

TECHNICAL DATA SHEET

info@deffner-johann.de | +49 9723 9350-0

Die in diesem Produktdatenblatt genannten Spezifikationen dienen nur zur Produktbeschreibung und beziehen sich auf den Zeitpunkt unmittelbar nach der Produktion bzw. Import des Produktes. Sie entsprechen den Angaben des Herstellers. Eine rechtsverbindliche Zusicherung bestimmter Eigenschaften oder der Eignung für einen bestimmten Einsatzzweck kann hieraus nicht abgeleitet werden. Durch unsachgemäßen Transport und / oder unsachgemäße Lagerung können sich Änderungen ergeben. Die Angaben in diesem Produktdatenblatt entbinden den Verarbeiter nicht von eigener Prüfung der Eigenschaften des Produktes und dessen Eignung für die vorgesehene Verwendung.

KL Gooseneck Light Guides

for KL Light Sources



These are flex and stay light guides that remain in place after positioning, providing flexible and obedient incident illumination for space-constrained applications.

Features:

- Available with one, two or three branches.
- Available as 2-branch Gooseneck plus flexible branch (Combi Light Guide).
- Focusing optics and filter accessories available.
- High white light transmission thanks to the use of SCHOTT PURAVIS® fibers.

Advantages:

- Perfect trade-off between flexibility and mechanical stability.
- Mechanical stability enables long-term usability and precise positioning for complete control of light placement.
- The Combi Light Guide can be fixed stationary at the microscope post.

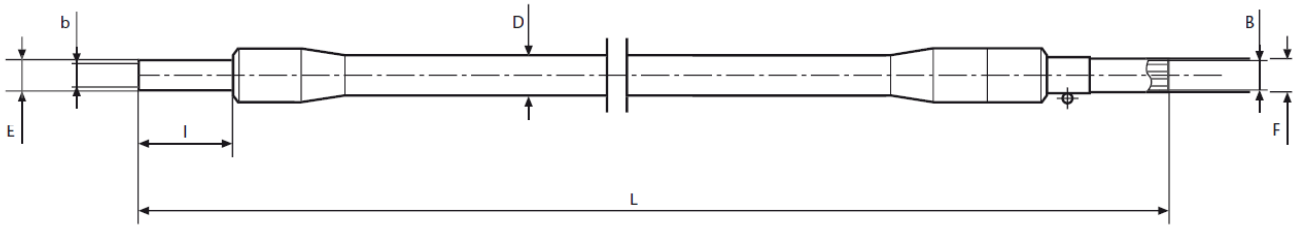
Types and compatibility

Type	Compatible cold light source	Part No.	Length	End tip Ø	End tip length	Active Ø branch	Active Common end Ø	Outer Ø Jacketing	Light source adapter Ø
			(L)	(E)	(l)	(b)	(B)	(D)	(F)
1- branch	KL 300 LED	170.101	500 mm 19.69"	6 mm 0.24"	20 mm 0.79"	3.5 mm 0.14"	5 mm 0.20"	11 mm 0.43"	9 mm 0.35"
	KL 1600 LED KL 2500 LED KL 1500 HAL	154.101	600 mm 23.62"	6 mm 0.24"	20 mm 0.79"	4.5 mm 0.18"	4.5 mm 0.18"	11 mm 0.43"	10 mm 0.39"
2- branch	KL 300 LED	170.202	500 mm 19.69"	6 mm 0.24"	20 mm 0.79"	3.5 mm 0.14"	5 mm 0.20"	11 mm 0.43"	9 mm 0.35"
	KL 1600 LED KL 2500 LED KL 1500 HAL	154.202	600 mm 23.62"	6 mm 0.24"	20 mm 0.79"	4.5 mm 0.18"	6.4 mm 0.26"	11 mm 0.43"	10 mm 0.39"
3- branch	KL 1600 LED KL 2500 LED KL 1500 HAL	154.302	600 mm 23.62"	6 mm 0.24"	20 mm 0.79"	4.5 mm 0.18"	7.8 mm 0.31"	11 mm 0.43"	10 mm 0.39"
Combi Light guide: 2-branch Gooseneck and 1-branch Flexible Light Guide	KL 300 LED KL 1600 LED KL 2500 LED KL 1500 HAL	170.402	(L) 500 mm 19.69" (L*) 800 mm 31.50"	6 mm 0.24"	20 mm 0.79"	4.5 mm 0.18"	6.4 mm 0.26" randomized	(D) 11 mm 0.43" (D*) 14 mm 0.55"	9 mm 0.35" and 10 mm 0.39"

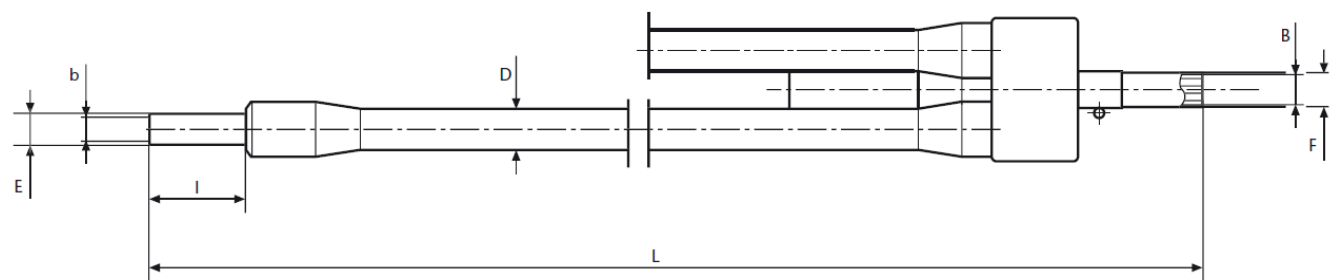
For compatibility with discontinued SCHOTT light sources and third party products, please contact us.

We provide a variety of optical and mechanical accessories for our KL light guides. For details please refer to our system diagrams or according datasheets.

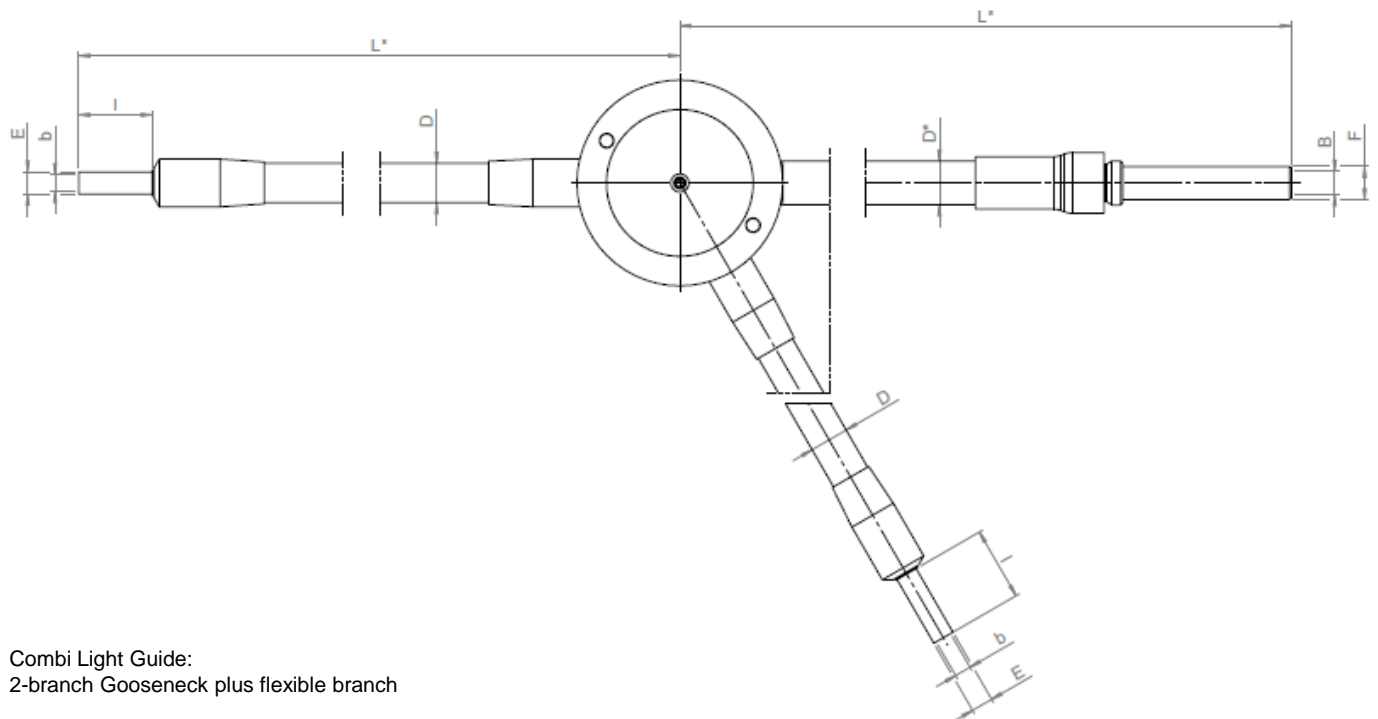
Dimensions



1-branch



2- and 3-branch



Combi Light Guide:
2-branch Gooseneck plus flexible branch

Pictures are provided for illustration purposes only, and may not provide an accurate reflection of the actual product.